

Turbo-W

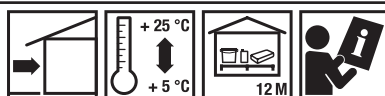
Insulation system on mineral wool with mineral plaster.


Areas of application: For the implementation of insulation systems in housing, public and industrial construction
For new and modernized buildings.
Especially suitable for buildings in the vicinity of trees, water reservoirs

Properties:

- Waterproof
- Frost-resistant
- Vapor-permeable
- Economic
- Eliminates thermal bridges in the wall
- Resistant to overgrowth
- inflammable

Application procedure:



Technical data	
Packaging type	
Quantity per unit	1 Piece
Layer thickness	50 - 250 mm
Reaction to fire (EN 13501-1)	A2-s1, d0
Adhesion to (Concrete)	≥ 0.25 MPa
Adhesion to (mineral wool)	≥ 0.08 MPa
sd value	≤ 0.4 m
Resistance to impact	Single mesh layer: Category III, double mesh layer: Category I
Water absorption	0.5 kg/m ²

The product conforms to: • European technical assessment ETA 15/0575

Material base:

- LEPSTYR-W 230/ STYRLEP-W 240/ STYRLEP-B 225
- Mineral wool, mechanical fasteners, reinforcing mesh
- STYRLEP-W 240/ STYRLEP-B 225
- TYNKOLIT-T 330/TYNKOLIT-U 340
- POZTYNK-SZ 061/062, SILICATE 002, SILICONE 003, SISI 004, NANOTECH 006, BIO PAINT 008, ECO PAINT 009

Surface: All substrates must have adequate load-bearing capacity, solid and compact structure and be cleaned of dust, grease, lubricants, release agents, paint residues, etc. Unstable coatings and coatings with insufficient adhesion must be removed. Oily and lubricated surfaces should be washed with detergent, infected with mold, moss, algae should be covered with SEPTOBUD 1008 and then washed under high pressure or mechanically removed.

Types of substrate:

Bricks and ceramic CMUs: Prime with GRUNTOLIT-W 301 or EXPERT 6

Silicate blocks: Prime with GRUNTOLIT-W 301 or EXPERT 6

Autoclaved aerated concrete elements: Prime with GRUNTOLIT-SG 302 or EXPERT 5

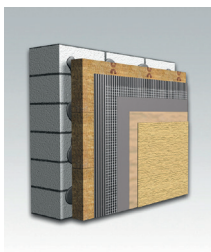
Concrete and concrete blocks: Prime with GRUNTOLIT-W 301 or EXPERT 6

Concrete, reinforced concrete: moisten with water, if very absorbent, prime with GRUNTOLIT-W 301

Old plasters: Prime with GRUNTOLIT-SG 302 or EXPERT 5

Old paint coats: Incompatible

Instructions: Protect against frost, precipitation, excessive drying during the execution of works and drying. Do not apply scaffolding covers.



Turbo-W

Insulation system on mineral wool with mineral plaster.

General information:

The complete set of thermal insulation system must be applied.

This product data sheet replaces all its previous versions. The information, included in this technical card, represents our current knowledge and practical experience. This is general information only which shall not obligate the manufacturer to take any responsibility either for workmanship or for the manner of use. For there may be differences and specific execution conditions. The product shall be applied in accordance with required technical knowledge and OHS rules. Avoid contact with skin and protect eyes. In case of contact with eyes, rinse them up with a large quantity of clean water and consult a doctor. It shall be recommended to use gloves, safety goggles and protective clothing.